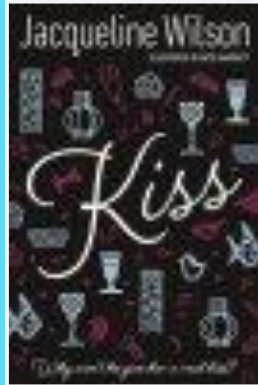


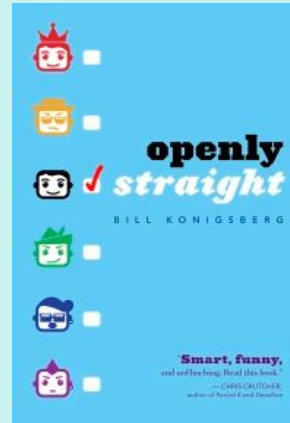
Sexuality Education in Secondary I ELA

Emotional and Romantic Life



Kiss Jacqueline Wilson

Sylvie, having dreamt that one day she will marry her best friend Carl, is hurt when she begins to realize that he might be more interested in boys than girls.



Openly Straight Bill Konigsberg

Openly gay Rafe hopes that a transfer to a new school where no one knows him will allow him to start fresh, but a new relationship teaches him the importance of being himself.

Learning Goal:

- Become aware of the role of feelings of love and attraction in adolescence.
- Understand how feelings of love and attraction help you to become aware of your sexual orientation.

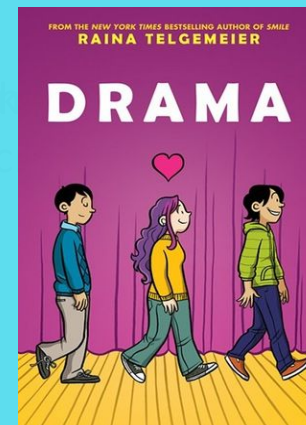


Stargirl Jerry Spinelli

“Did you see her?” Susan, also known as Stargirl, is unlike anyone Leo has ever met. He is attracted to her kindness, her bravery and her refreshing free-spiritedness.

Drama Raina Telgemeier

Friends, frenemies, crushes and feelings of attraction, love and sexual orientation are explored when Callie and her friends put on a school play.



Sample Questions to Guide Discussion:

In book club groups, consider the way each novel presents the emotional lives of the characters and the types of relationships they form.

In a large or small group setting, discuss the way relationships are constructed in the text(s). Consider the role and impact of feelings of friendship, love and attraction.

Explore the importance the characters give to the idea of being in a relationship. What benefits or challenges do they foresee?

Sample Activities to Complement Discussion:

Initiate an inquiry into the role of feelings of love and attraction on relationships and sexual identity. Create an inquiry question and use the texts, along with additional research, to address the question. Share the finding of the inquiry through a spoken or written presentation.

Suggested Keywords: friendship, high school, sexual identity, sexual orientation, self-esteem, self-identity, LGBTQ, romantic relationships.